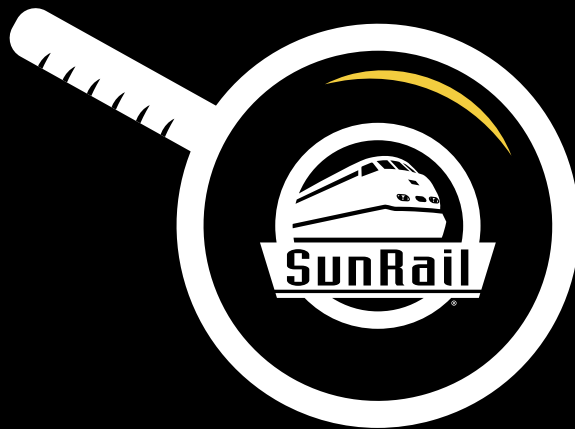


GET A **Clue** ABOUT RAIL SAFETY

RAIL SAFETY WEEK MEDIA KIT

September 23 - 27, 2024

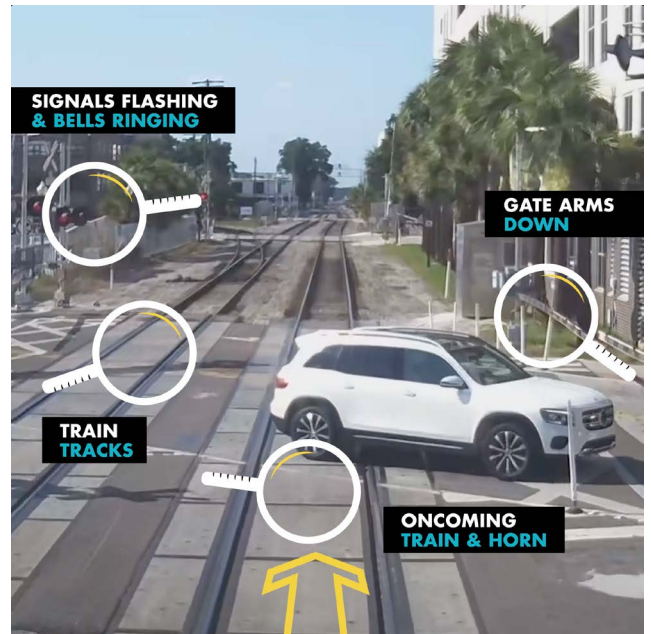


IT'S TIME TO PROMOTE RAIL SAFETY, CENTRAL FLORIDA!

Every incident at a grade crossing and on the tracks is preventable. During Rail Safety Week, SunRail will remind the community that the clues needed to stay safe around trains and tracks are all around you.

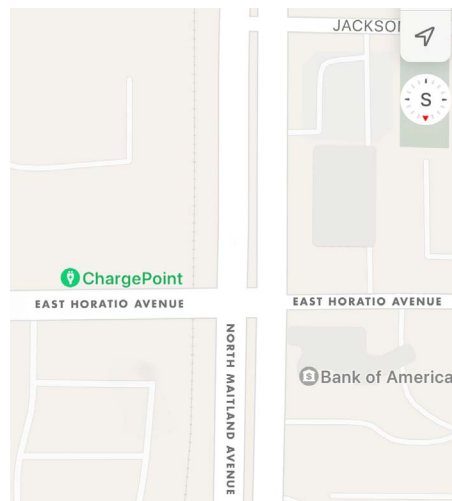
Within this media kit, you will find a host of digital assets being shared with the community as well as important tips to keep you safe while reporting near the tracks.

We invite you to take part and help promote rail safety in Central Florida!



Join us for: **MEDIA AVAILABILITY DAY**

- **Tuesday, September 24, 2024**
8:30 a.m. – 10:00 a.m.
- **Parking lot located at East Horatio Avenue and North Maitland Avenue**
- Meet and interview FDOT as Maitland Police Department will be conducting grade crossing enforcement



To learn more please contact:
FDOT Public Information Office
386.943.5593 or FDOT-D5COMM@dot.state.fl.us



DOWNLOADABLE MEDIA RESOURCES

SUNRAIL GET A CLUE VIDEOS

SunRail will highlight the many 'clues' that are at and around grade crossings and railroad tracks that drivers, cyclists, and pedestrians can spot to avoid getting into an unsafe situation. Four characters, each with a different theme, will guide the viewer through different situations focusing on the vital safety information; You Can't Beat the Train, Avoid Distractions Near Tracks, Do Not Stop On Tracks, and Do Not Walk On Tracks.



[Click Here to Watch](#)

Videos will be released on social media each day starting Monday, September 23, 2024.

SHARE ON SOCIAL MEDIA

Share this graphic and repost SunRail safety messages through Instagram, X, and Facebook.



[Click Here to Download](#)

SUGGESTED TEXT: It's time to "Get a Clue" about rail safety during Rail Safety Week! Join us in spreading awareness and keeping our community safe. Whether you're a driver, cyclist, or pedestrian, staying alert around train tracks is a must. Remember, it only takes one mistake to cause a tragedy—so always stay aware and follow the traffic laws. Want to learn more? Visit SunRail.com to get a clue about rail safety and discover how you can help protect loved ones, neighbors, and even yourself.

#RailSafety #GetAClue #SunRailSafety

RAIL SAFETY WEB BANNERS

Display safety banners on your organization's website to raise awareness and promote rail safety in Central Florida.

[Click Here to Download](#)



To view SunRail's complete Electronic Press Kit, [Click Here](#)

To learn more please contact:

FDOT Public Information Office

386.943.5593 or FDOT-D5COMM@dot.state.fl.us

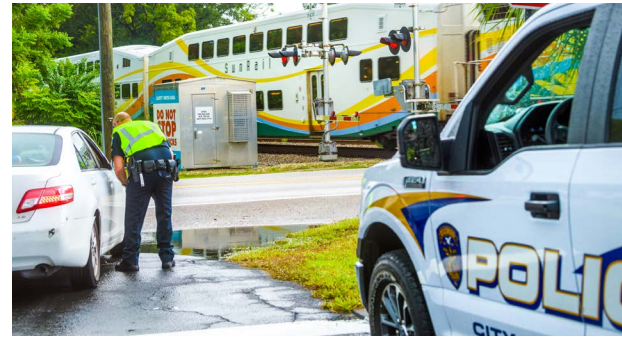


PUBLIC OUTREACH OVERVIEW

- Media Availability
Tuesday, September 24, 2024
8:30 a.m. – 10:00 a.m.

Parking lot located at East Horatio Avenue and North Maitland Avenue

Meet and interview FDOT as Maitland Police Department will be conducting grade crossing enforcement
- Law enforcement education and enforcement days at grade crossings in all four counties
- Safety presentations are available for community organizations, as requested by schools/daycares
- SunRail Safety Watch outreach to businesses and residences near the rail corridor
- Bus driver safety education presentations
- First responder incident response training
- Educational handouts at SunRail stations
- Commercial driver outreach



DID YOU KNOW?

Florida Statutes 316.1575 imposes fines and community service for stopping within 15 feet of railroad tracks?

For a first violation, the person must pay a fine of \$500 or perform 25 hours of community service and shall have 6 points assessed against his or her driver license as set forth in s. 322.27(3)(d)7.

For a second or subsequent violation, the person must pay a fine of \$1,000 and shall have an additional 6 points assessed against his or her driver license as set forth in s. 322.27(3)(d)7.

To learn more please contact:

FDOT Public Information Office

386.943.5593 or FDOT-D5COMM@dot.state.fl.us



MEDIA TIPS

BE SMART. BE SAFE.

**Park vehicles at least 75 feet from the railroad right of way
OR
the height of the mast plus 4 additional feet**



Keep Back 25 Feet from Tracks (2 Car Lengths)

Trains are wider than the tracks and stand ups around the tracks are extremely dangerous. Always be aware of your surroundings and keep back at least 25 feet from tracks. Maintain a clear view of your footing and avoid walking through slippery and unstable or uneven areas.



Avoid Distractions Near the Tracks

Trains can't swerve and can take more than one mile to stop. Avoid texting, earbuds, and phones when near the tracks. In an emergency, get as far away as possible and dial 911 – taking note of any rail crossing markers.



Obey Railroad Signs and Signals

Trains can come on any track, at any time and from any direction. Speed perception is diminished on train tracks and trains travel faster and are closer than they seem. Report from a safe distance and always obey railroad signs and signals.



Do Not Walk or Place Objects on the Tracks

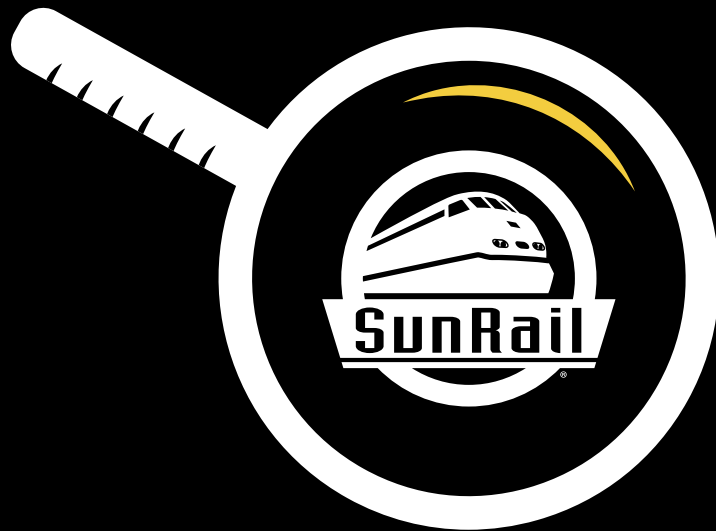
Do not walk on the tracks or shoot photographs or video on the tracks. This puts you and your crew in imminent danger and is considered trespassing. Do not place objects on the tracks – this also is trespassing and puts you in imminent danger. Train speed can transfer to objects on the track, creating high speed and deadly projectiles.

To learn more please contact:

FDOT Public Information Office

386.943.5593 or FDOT-D5COMM@dot.state.fl.us





THANK YOU

for your support of SunRail Safety

For more information, please contact
386.943.5593 or FDOT-D5COMM@dot.state.fl.us

Additional Resources

  
@RideSunRail

SunRail Electronic Press Kit:
SunRail.com/press-kit